

# ALT950

TELESCOPIC ARTICULATED LOADER

**GEHL**®



## KEY FEATURES

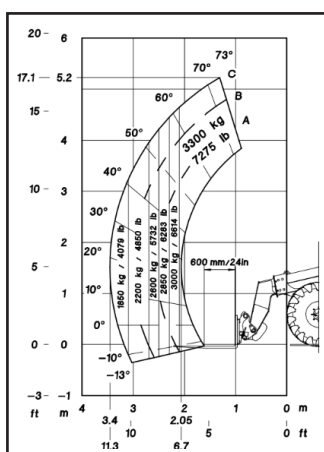
- ✓ CVT Transmission
- ✓ Multi-Function Joystick
- ✓ Improved Visibility
- ✓ 2D Articulation
- ✓ Rear Axle Oscillation
- ✓ Spacious Cabin
- ✓ Air-Conditioned Cab\*
- ✓ 143 hp Deutz Engine
- ✓ 158 L/min. Hydraulic Flow
- ✓ Hydraulic Locking System Attachment Mount
- ✓ Continuous Flow
- ✓ ECO Mode

\*Optional features

# ALT950 TELESCOPIC ARTICULATED LOADER

## SPECIFICATIONS

|                 |  | METRIC                             | IMPERIAL             |
|-----------------|--|------------------------------------|----------------------|
| DIMENSIONS      | Height to Top of Cab / ROPS              | 2.7 m                              | 8' 10"               |
|                 | Width over Tires                         | 2.29 m                             | 7' 6"                |
|                 | Length to Carriage                       | 5.72 m                             | 18' 9"               |
|                 | Maximum Lifting Height (below forks)     | 5.2 m                              | 17' 0"               |
|                 | Maximum Dump Angle at Full Height        | 156°                               |                      |
|                 | Outer Turning Radius                     | 4.2 m                              | 13' 9"               |
|                 | Articulation Angle from Center           | 44°                                |                      |
| LOAD CAPACITIES | Static Tipping Load with Forks Straight  | 4978 kg                            | 10,974 lbs           |
|                 | Static Tipping Load with Forks Full Turn | 4147 kg                            | 9,142 lbs            |
|                 | Bucket Breakout                          | 6730 daN                           | 15,129 lbf           |
|                 | Operating Weight with Bucket             | 8490 kg                            | 18,717 lbs           |
| ENGINE          | Engine Manufacturer                      | Deutz                              |                      |
|                 | Model / Number of Cylinders              | TCD 4.1 L4 / 4                     |                      |
|                 | Gross Power @ 2300 rpm                   | 105 kW                             | 143 hp               |
|                 | Displacement                             | 4083 cm <sup>3</sup>               | 1607 in <sup>3</sup> |
| HYDRAULICS      | Work Hydraulic System Flow               | 158 L/min                          | 42 gal/min           |
|                 | Drive Hydraulic System Pressure          | 270 bar                            | 3000 psi             |
|                 | Drive Hydraulic Reservoir Capacity       | 150 L                              | 40 gal               |
| OTHER           | Travel Speed                             | 40 kph                             | 25 mph               |
|                 | Fuel Tank Capacity                       | 150 L                              | 40 gal.              |
|                 | Tires                                    | 460 / 70 R24 159A8 A580 - Alliance |                      |



GEHL COMPACT EQUIPMENT

West Bend, WI 53095 U.S.A. | Tel: 262-334-9461 | Fax: 262-338-7517



## STANDARD FEATURES

- Cabin with heat
- Proportional Auxiliary Hydraulics with Circuit Pressure Dump
- CVT Transmission (40Kph)
- Inching Pedal
- Electronic Hand Throttle
- Digital Display with Audible and Visual Indicators
- Steering Column with Tilt and Extension Adjustments
- Differential Lock
- Oscillating Rear Axle
- Rubber floor mat
- Adjustable Arm Rest
- Seven-Way Adjustable Seat
- 12-Volt Socket/USB-plug near arm rest
- Telescopic Lift Arm
- Multi-Function Joystick
- Lift/Tilt Electronic Lockout Switch
- Articulation Locking Bar (conforms to SAEJ276)
- Horn
- Side View Mirrors
- Front, Rear & Boom Worklights
- Road Lights
- ECO-Mode
- Radio
- Continuous Flow Hydraulics
- Storage Boxes
- Speed Control
- Rotating Beacon
- License Plate Holder

## OPTIONAL FEATURES

- Cabin with Heat and Air Conditioning
- LED Work Lights
- Back-up Alarm
- Active Comfort Ride Control (Boom Suspension)
- Rear Auxiliary Hydraulics
- Radio (Bluetooth Hands-Free)
- Engine Block Heater
- Regenerative Hydraulics
- Electric Mirrors with de-icing
- Hydraulic Pick-Up Hitch
- Tire Options

Gehl Company reminds users to read and understand the operator's manual before operating any equipment. Also, make sure all safety devices and shields are in place and functioning properly.

Gehl reserves the right to add improvements or make changes in specifications at any time without notice or obligation.